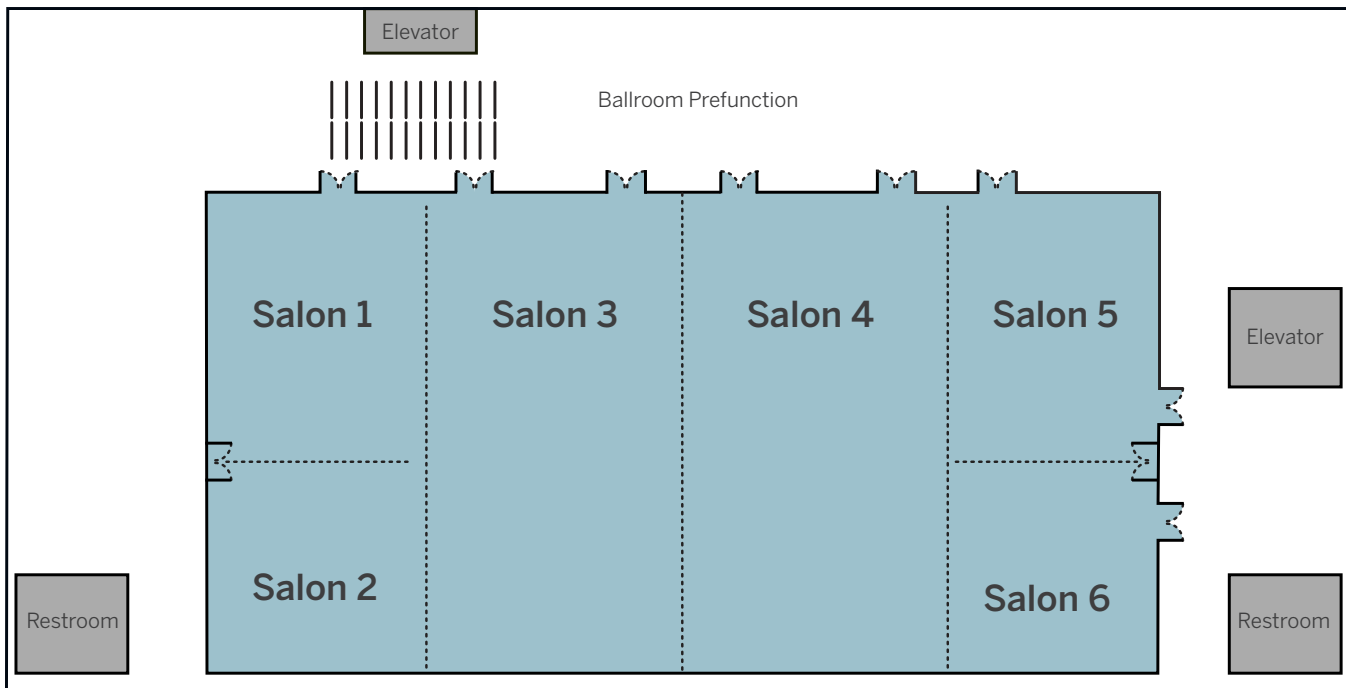


Zlotnik Family Ballroom

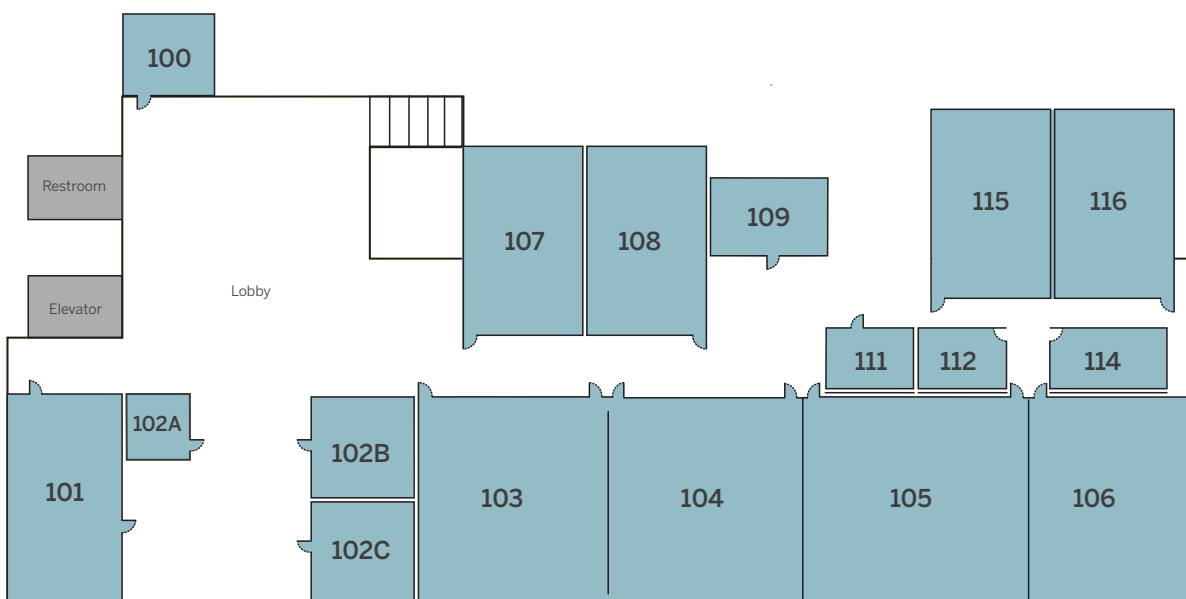
Meeting Room	Dimensions	Square Ft.	Classroom	Theatre	Conference	US	HS	Rounds	Reception
Zlotnik Family Ballroom	183'-3" x 78'-11" x 26'-0"	14,461	800	1600				1000	1600
Ballroom Prefunction	211'-11" x 27'-7"	5,845							600
Salon 1	44'-6" x 39'-6"	1,758	80	150	32	36	48	120	200
Salon 2	44'-6" x 39'-6"	1,758	80	150	32	36	48	120	200
Salon 3	78'-11" x 47'-0"	3,709	200	300		72	96	240	400
Salon 4	78'-11" x 47'-0"	3,709	200	300		72	96	240	400
Salon 5	44'-6" x 39'-6"	1,758	80	150	32	36	48	120	200
Salon 6	44'-6" x 39'-6"	1,758	80	150	32	36	48	120	200
Salon 1+2 (or 5+6)	78'-11" x 44'-6"	3,512	200	150		72	96	240	400
Salons 1+2+3 (or 4+5+6)	91'-6" x 78'-11"	7,221	400	800				500	800
Salons 1+2+3+4 (or 3+4+5+6)	138'-8" x 78'-11"	10,943	600	1200				750	1200



Meeting Level 1

CONFERENCE CENTER

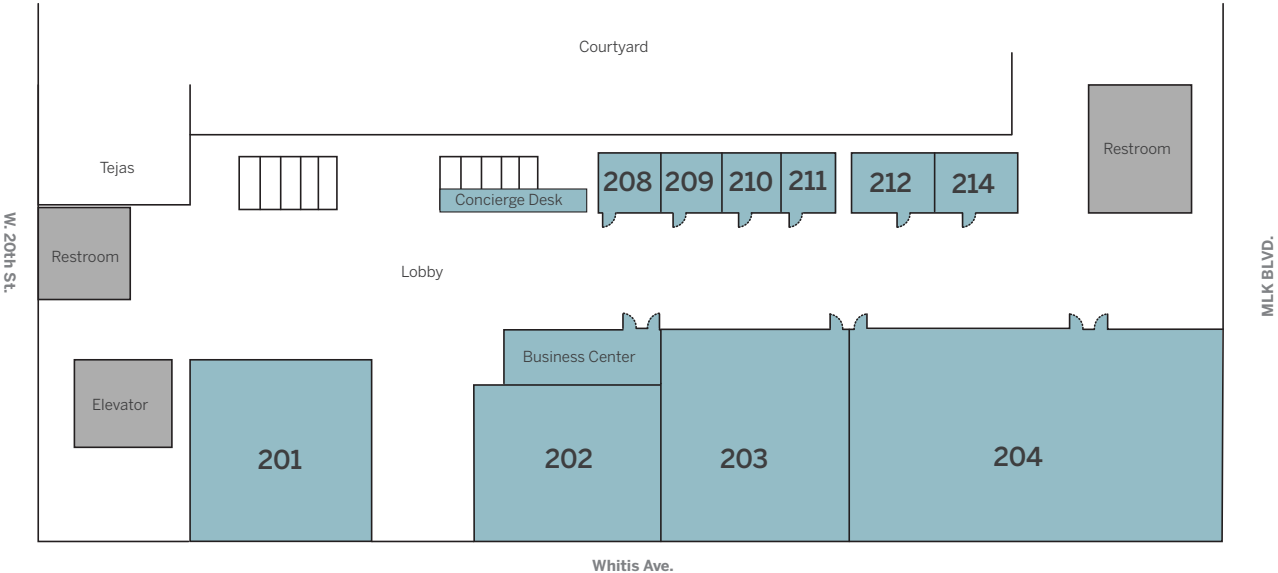
Meeting Room	Dimensions	Square Ft.	Classroom	Theatre	Conference	US	HS	Rounds	Reception
Boardroom 100	33' x 18' x 8'	595			14				
Classroom 101	43' x 42'	1805	65						
Breakout 102.A	15' x 13' x 9'	192			10				
Breakout 102.B	17' x 20' x 9'	331	25	40	16	15	20	30	40
Breakout 102.C	17' x 24' x 9'	387	25	40	16	15	20	30	40
Classroom 103	43' x 39' x 9'	1675	84	200	32	24	34	90	200
Classroom 104	43' x 39' x 9'	1675	84	200	32	24	34	90	200
Classroom 105	52' x 42'	2185	90						
Classroom 106	52' x 42'	2185	90						
Classroom 107	35' x 27' x 9'	945	45	108	24	21	29	50	100
Classroom 108	35' x 27' x 9'	945	45	108	24	21	29	50	100
Breakout 109	14' x 11' x 8'	155			8				
Breakout 111	16' x 10' x 9'	160			8				
Breakout 112	13' x 16' x 9'	210			8				
Breakout 114	13' x 16' x 9'	210			8				
Classroom 115	27'x2x42'1	1158	70	100				70	
Classroom 116	20'8x38'8	1051	60	80				60	



Meeting Level 2

CONFERENCE CENTER

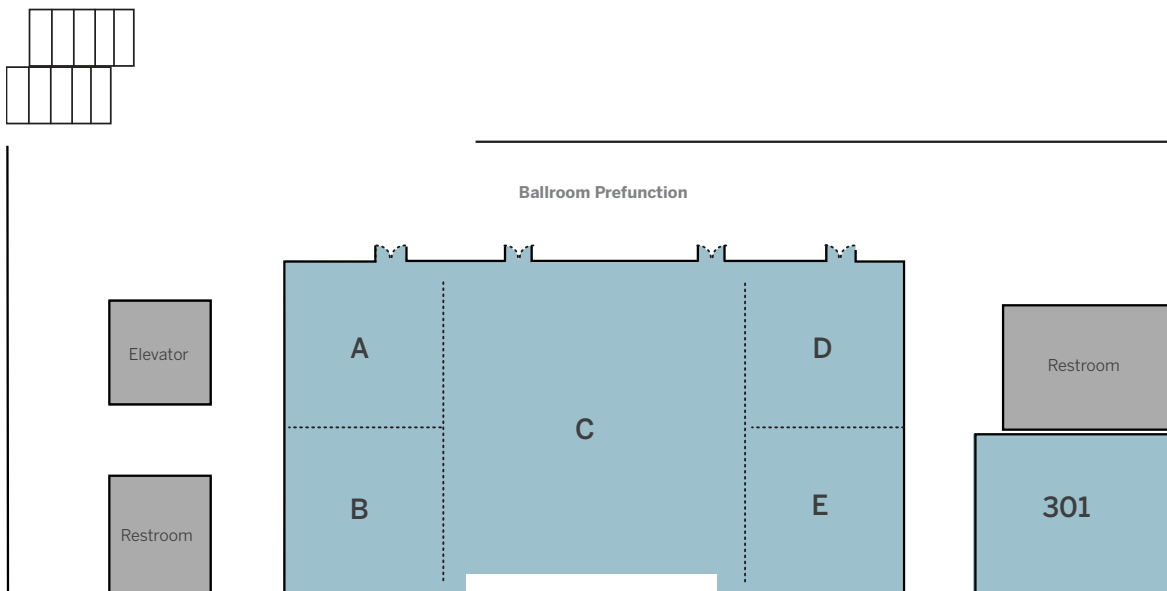
Meeting Room	Dimensions	Square Ft.	Classroom	Theatre	Conference	US	HS	Rounds	Reception
Classroom 201	46' x 43'	1980	65						
Classroom 202	43' x 45'	1935	65						
Classroom 203	52' x 52'	2700	90						
Classroom 204	46' x 92'	4230	300						
Breakout 208	15' x 9' x 15'	135			8				
Breakout 209	14' x 9' x 15'	125			8				
Breakout 210	14' x 9' x 15'	125			8				
Breakout 211	9' x 15' x 15'	135			8				
Breakout 212	14' x 11' x 15'	155			8				
Breakout 214	13' x 11' x 14'	145			8				
Tejas Dining Room		6420						350	500
Interior Courtyard								350	500



Meeting Level 3

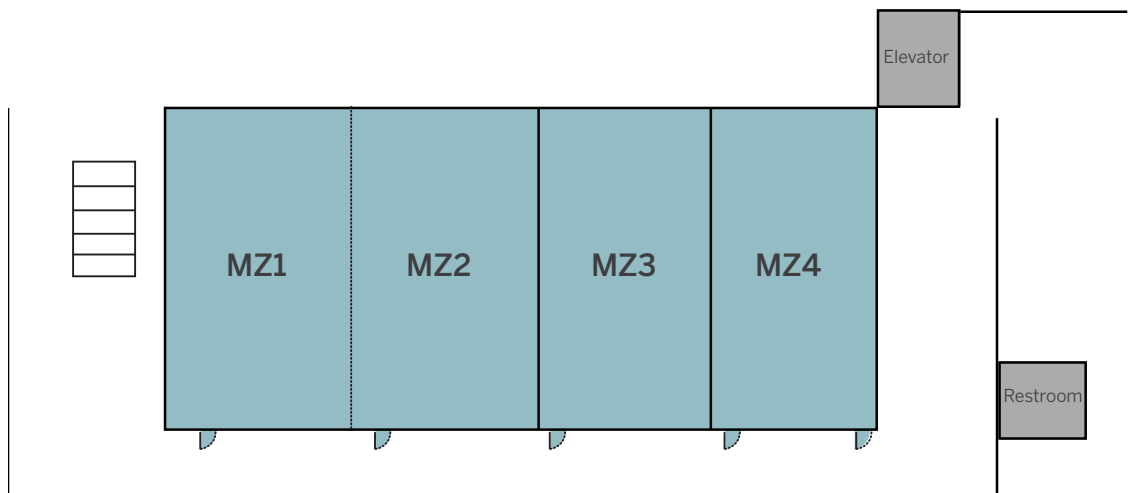
CONFERENCE CENTER

Meeting Room	Dimensions	Square Ft.	Classroom	Conference	Theatre	US	HS	Rounds	Reception
Grand Ballroom	71 x 147' x 20'	10,437	540		1000			650	1000
Ballroom Prefunction		3461							370
Salon A	31' x 34' x 20'	1055	50	24	130	22	30	60	130
Salon B	31' x 34' x 20'	1055	50	24	130	22	30	60	130
Salon C	85' x 67' x 20'	5700	400		600			350	600
Salon D	32' x 34' x 20'	1090	50	24	130	22	30	60	130
Salon E	32' x 34' x 20'	1090	50	24	130	22	30	60	130
Salon AB	31' x 67' x 20'	2075	100	50	220	46	52	130	220
Salons DE	32' x 68' x 20'	2175	100	50	220	46	52	130	220
Salons ABC	67' x 115' x 20'	7705	500		800			550	800
Salons CDE	67' x 117' x 20'	7840	500		800			550	800
Conf Room 301	41' x 45' x 10'	1845	100	32	200	36	48	120	200





Meeting Room	Dimensions	Square Ft.	Classroom	Theatre	Conference	US	HS	Reception	Rounds
MZ 1	28' x 20' x 9'	560	30	40	16	18	24	30	40
MZ 2	25' x 20' x 9'	500	30	40	16	18	24	30	40
MZ 3	28' x 20' x 10'	560	30	40	16	18	24	30	40
MZ 4	28' x 20' x 10'	560	30	40	16	18	24	30	40

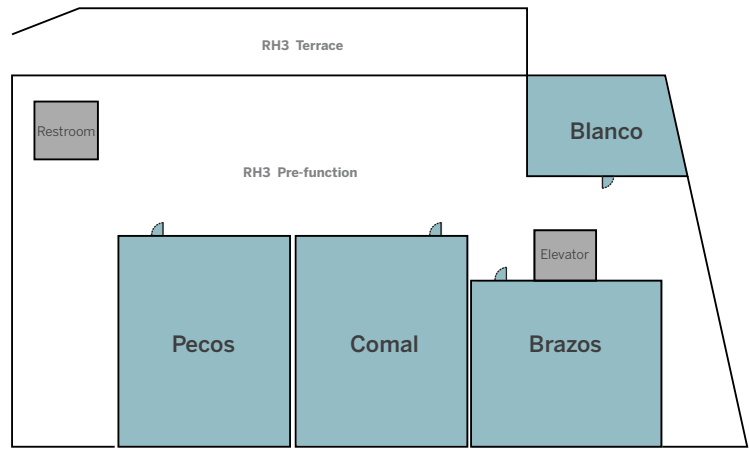


Rowling Hall 3 & 4

TEXAS EXECUTIVE EDUCATION SUITE

Meeting Room	Dimensions	Square Ft.	Classroom	Theatre	Conference	US	HS	Rounds	Reception	Pod
Blanco	21'-0" - x 31'-0"	650				14				
Brazos	30'-11" x 38'-8"	1200								24
Pecos	41'-7" x 33'-2"	1350								40
Comal	41'- 4" x 33'-2"	1370								32
Lavaca	32'-6" x 35'-10"	1200	70	130	26	30	40	90	130	
Guadalupe	39'-3" x 52'x8"	2080	108	220	32	72	96	130	230	

LEVEL 3



LEVEL 4

